



The Gables

Morpeth

- Four Bedroomed Family Home
- Large Private Driveway
- Great Location
- Spacious Property
- Fully Enclosed Garden
- Freehold

Offers In The Region Of £330,000

01670 511 711
morpeth@rmsestateagents.co.uk

ROOK
MATTHEWS
SAYER

www.rookmatthewssayer.co.uk
morpeth@rmsestateagents.co.uk

The Gables Morpeth

Simply stunning four bedroomed family home with your very own private oasis! Situated on The Gables, Widdrington, this property boasts a great location, tucked away on a quiet residential street. Internally offering high end fixtures and fittings throughout, with a one-of-a-kind enclosed garden to the rear. Widdrington itself offers a quiet village life, with a few local amenities on your doorstep a very popular choice with families. Morpeth town Centre, is only a short drive away where you will find an array of high-end bars, restaurants, shops and river walks to choose from.

The property briefly comprises:- Entrance hallway, two impressive separate lounges, both allowing floods of natural light due to the large windows overlooking the front garden. The large high spec kitchen has been fitted with a range of modern high gloss wall and base units, offering an abundance of storage. Appliances include an electric hob, electric oven, extractor fan, integrated fridge/freezer and wine cooler. The impressive kitchen has patio doors leading straight though into a rear conservatory that is flooded with natural light and has fabulous views over the rear garden. You further benefit from a separate utility space, which leads seamlessly into a separate dining room which could also be used as a downstairs bedroom to suit your needs. In addition, there is a downstairs wet room, fitted with W.C., hand basin, and walk-in shower.

To the upper floor of the accommodation, you have four good sized bedrooms, three doubles and one single. All offering excellent storage and have been carpeted throughout and finished with a light décor. The main family bathroom has been fitted with W.C, hand basin and bath tub. In addition, there is a second bathroom which has also been fitted with W.C., hand basin, bath tub and further benefits from a separate shower.

Externally, the property has a private driveway which can accommodate at least two cars and a single garage which can be used for storage. To the rear you have a stunning mature south facing garden with patio area, which is full of vibrancy and life and offers you your very own tranquil oasis to relax in. The garden is a sheer credit to its current owners and will suit someone who enjoys outdoor living at its finest.

Early viewings are highly recommended to appreciate the space on offer.

Lounge One: 12'5 x 23'2 Max Points (3.78m x 7.06m)
 Lounge Two: 14'10 x 15'3 Max Points (4.52m x 4.65m)
 Kitchen: 18'1 x 10'8 (5.51m x 3.25m)
 Utility Room: 10'4 x 5'11 (3.15m x 1.80m)
 Wet Room: 5'3 x 7'11 (1.60m x 2.41m)
 Dining Room: 8'7 x 15'3 Max Points (2.62m x 4.65m)
 Bedroom One: 12'9 x 12'5 Max Points (3.89m x 3.78m)
 Bedroom Two: 12'3 x 9'8 Max Points (3.73m x 2.95m)
 Bedroom Three: 9'1 x 11'0 (2.77m x 3.35m)
 Bedroom Four: 8'2 x 6'6 (2.48m x 1.98m)
 Bathroom One: 8'7 x 5'5 (2.62m x 1.65m)
 Bathroom Two: 12'5 x 5'11 (3.78m x 1.80m)

PRIMARY SERVICES SUPPLY

Electricity: Mains
 Water: Mains
 Sewerage: Mains
 Heating: Central Gas
 Broadband: Fibre to Cabinet
 Mobile Signal / Coverage Blackspot: No
 Parking: Private Driveway

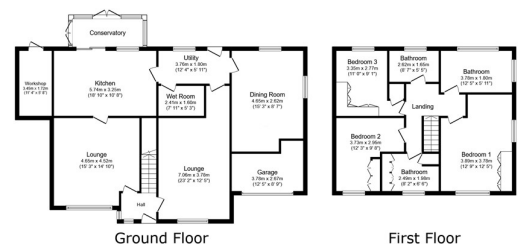
TENURE

Freehold – It is understood that this property is freehold, but should you decide to proceed with the purchase of this property, the Tenure must be verified by your Legal Adviser

EPC Rating: TBC

Council Tax Band: C

M00007968.LB.JD.11/10/2024.V.1



This floor plan is for illustrative purposes only. It is not drawn to scale, and measurements, floor areas, heights and other details, coverings and orientations are approximate. We declare our measurements, floor levels and other details for the purposes and to the best of our knowledge. No liability is taken for any errors or omissions. It is a guide only and does not constitute an offer. Please contact the agent for more information.

Important Note: Rook Matthews Sayer (RMS) for themselves and for the vendors or lessors of this property, whose agents they are, give notice that these particulars are produced in good faith, are set out as a general guide only and do not constitute part or all of an offer or contract. The measurements indicated are supplied for guidance only and as such must be considered incorrect. Potential buyers are advised to recheck the measurements before committing to any expense. RMS has not tested any apparatus, equipment, fixtures, fittings or services and it is the buyer's interests to check the working condition of any appliances. RMS has not sought to verify the legal title of the property and the buyers must obtain verification from their solicitor. No persons in the employment of RMS has any authority to make or give any representation or warranty whatever in relation to this property.

Money Laundering Regulations – intending purchasers will be asked to produce original identification documentation at a later stage and we would ask for your co-operation in order that there will be no delay in agreeing the sale. We will also use some of your personal data to carry out electronic identity verification. This is not a credit check and will not affect your credit score.

16 Branches across the North-East

