

STEPHENSON MEADOWS

SHARED OWNERSHIP

NEWCASTLE UPON TYNE, NE5 1BX



PROPERTY DESCRIPTION

A collection of 2 & 3 Bed Houses available now with Shared Ownership (Part Buy-Part Rent). The advertised price is based on the full market value.

In the popular suburb of Callerton you will find Stephenson Meadows only 5 miles from the vibrant city of Newcastle and close to popular villages of Chapel House and Westerhope.

This development offers stylish and modern homes with fitted contemporary kitchens and bathrooms. At Stephenson Meadows you will be surrounded by open countryside yet close to great amenities and transport links creating a place you'll love to call home.

LOOK NO FURTHER WITH;

- TWO AND THREE BEDROOMS
- TWO AND THREE STOREY HOUSES
- GROUND FLOOR WC
- ENCLOSED GARDEN WITH FRENCH DOOR ACCESS
- EASY ACCESS TO THE A69 AND A1
- EPC PROJECTED B OR ABOVE
- RESERVE OFF PLAN



PROPERTY DESCRIPTION



THE KIPTON & THE PIERSON 3B/6P 3 STOREY

KEY FEATURES

- Open plan kitchen / dining with French doors leading to the garden
- Spacious lounge
- Three storey living, perfect for growing families
- En-suite and storage to top floor principal bedroom
- Spacious bedrooms and family bathroom to first floor
- Downstairs WC

HOUSE TYPE 2 2B/4P 2 STOREY

KEY FEATURES

- Spacious lounge with french door access leading to the garden
- Kitchen with dining area
- 2 double bedrooms
- Family bathroom
- Downstairs WC

HOUSE TYPE 3 3B/5P 2 STOREY

KEY FEATURES

- Spacious lounge
- Open plan kitchen/dining area with French doors leading to the garden
- 2 double bedrooms and 1 single bedroom
- Family bathroom
- Downstairs WC

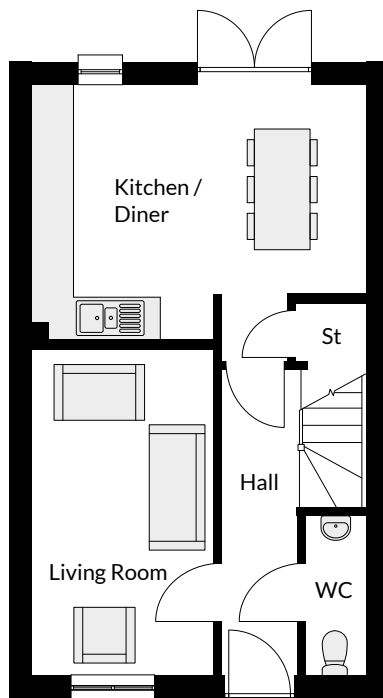
THE KIPTON



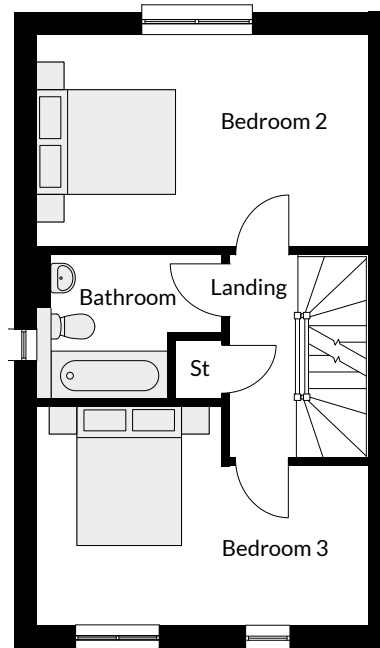
THE PIERSON



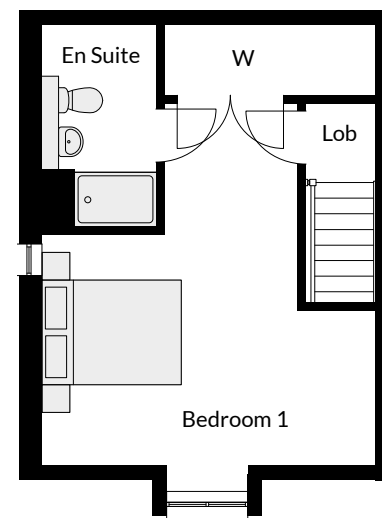
3 BEDROOM - THE KIPTON



GROUND FLOOR

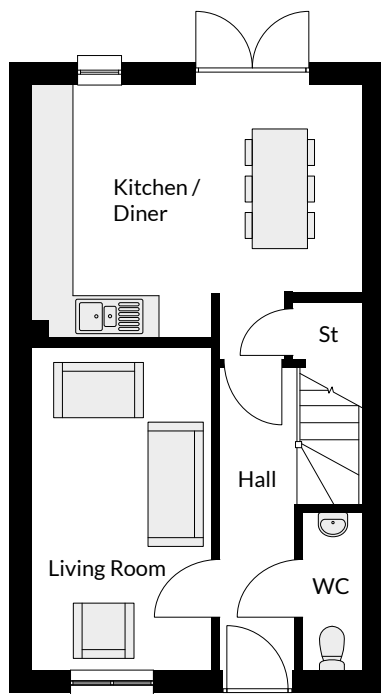


FIRST FLOOR

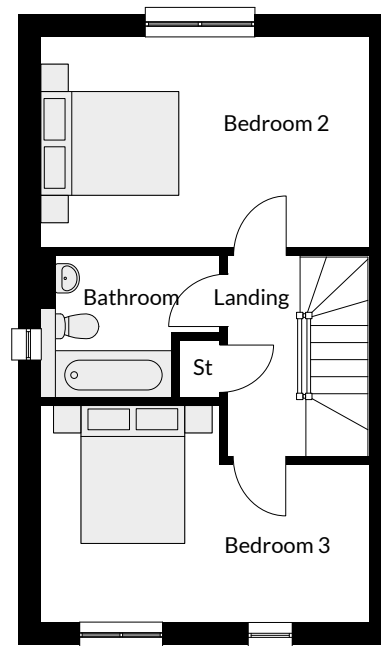


SECOND FLOOR

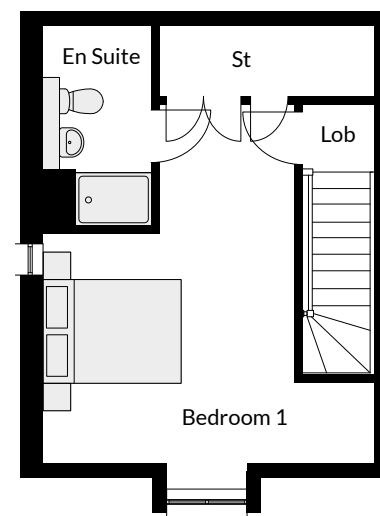
3 BEDROOM - THE PIERSON



GROUND FLOOR

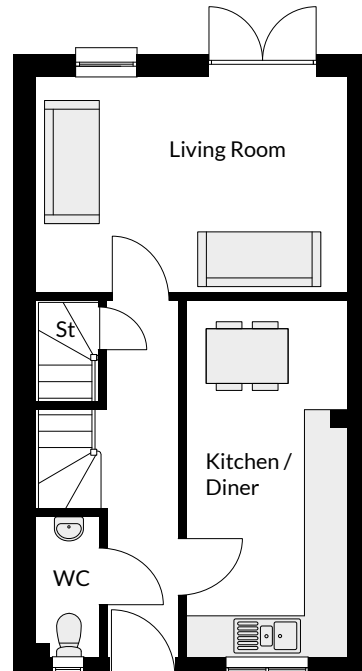


FIRST FLOOR

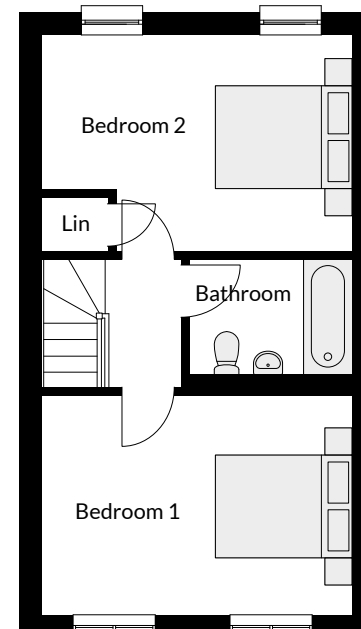


SECOND FLOOR

2 BEDROOM - HT 2

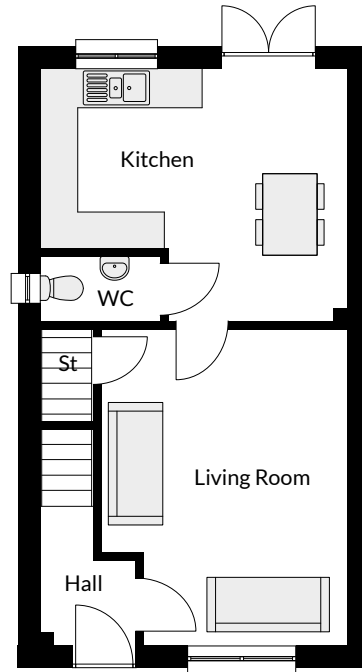


GROUND FLOOR

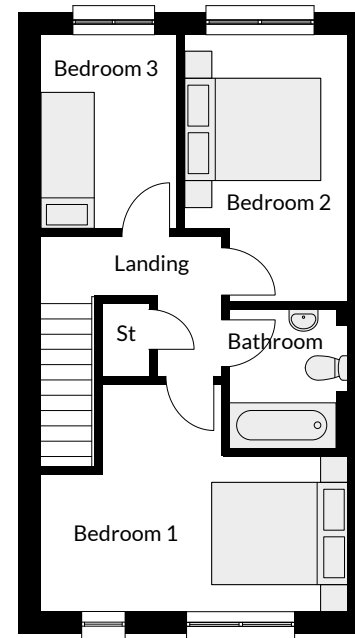


FIRST FLOOR

3 BEDROOM - HT 3



GROUND FLOOR



FIRST FLOOR

CONTACT OUR **WEST DENTON** BRANCH
FOR MORE INFORMATION

CALL US ON: **0191 267 1031**

EMAIL US AT: **WESTDENTON@RMSESTATEAGENTS.CO.UK**

The advertised price is based on the full market value

Rook Matthews Sayer, 120 The Roman Way, West Denton, NE5 5AD

