



Deneside Court Jesmond

- Two bedroom first floor apartment
- South facing balcony overlooking communal courtyard
- Close to green spaces
- Perfect for first time buyers
- Leasehold
- EPC rating C
- Council tax band C

Offers over £140,000



0191 281 6700
51 St Georges Terrace, Jesmond, NE2 2SX

ROOK
MATTHEWS
SAYER

www.rookmatthewssayer.co.uk
jesmond@rmsestateagents.co.uk

Deneside Court

Jesmond

We are thrilled to present this lovely apartment for sale that is just waiting for its new owner. Perfect for first-time buyers, this property is a delightful blend of comfort and convenience.

The home is neutrally decorated, providing a calm, serene ambience and a blank canvas for you to add your personal touch. You'll find two cosy bedrooms, a welcoming spacious Lounge, contemporary bathroom WC and an ample kitchen.

A standout feature of this flat is the south-facing balcony overlooking the communal courtyard. Perfect for your morning coffee!

Located close to local amenities, you'll have everything you need right at your doorstep. And for those who love the outdoors, the nearby green spaces will be a treat.

COMMUNAL ENTRANCE

Staircase to all floors.

ENTRANCE HALL

Two built in cupboards, one housing hot water cylinder.

LOUNGE – 18'8 (5.7m) x 9'6 (2.9m)

Double glazed patio door to the front leading to south facing balcony, electric heater.

KITCHEN – 8'3 (2.5m) into door recess x 8'6 (2.6m)

Single drainer sink unit, built in electric oven, built in electric hob, extractor hood, part tiled walls, built in cupboard, electric heater, double glazed window to the front.

BEDROOM 1 – 11'2(3.4m) x 9'6 (2.9m)

Double glazed window to the rear, electric heater.

BEDROOM 2 – 7'6 (2.3m) x 8'11 (2.7m)

Double glazed window to the rear, built in cupboard, electric heater.

BATHROOM/WC – 5'3 (1.6m) x 6'7 (2.0m)

White 3 piece suite comprising; panelled bath with electric shower over, wash hand basin set in vanity unit, low level wc, tiled walls, electric heated towel rail.

PRIMARY SERVICES SUPPLY

Electricity: MAINS

Water: MAINS

Sewerage: MAINS

Heating: ELECTRIC

Broadband: FIBRE

Mobile Signal Coverage Blackspot: NO

Parking: COMMUNAL PARKING

MINING

The North East region is famous for its rich mining heritage and therefore it will be beneficial to conduct a mining search. Confirmation should be sought from a conveyancer as to its effect on the property, if any.

TENURE

Leasehold. It is understood that this property is leasehold. Should you decide to proceed with the purchase of this property, the Tenure and associated details and costs must be verified by your Legal Advisor before you expend costs.

Length of Lease: 999 Years from 1st January 1986

Service Charge: £884 paid every 6 months

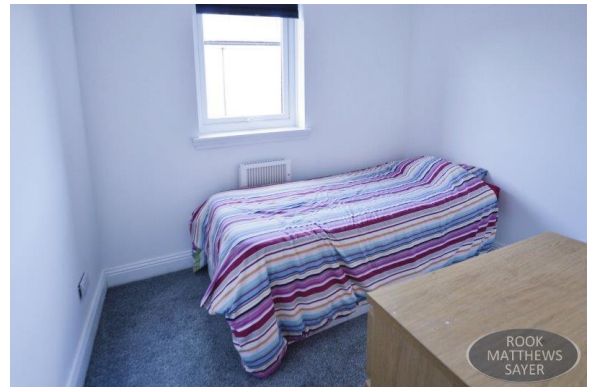
The property does hold a share of the freehold.

COUNCIL TAX BAND: C

EPC RATING: C

JR00004419.CW.KC.04/03/25.V.1

Score	Energy rating	Current	Potential
92+	A		
81-91	B		85 B
69-80	C	73 C	
55-68	D		
39-54	E		
21-38	F		
1-20	G		

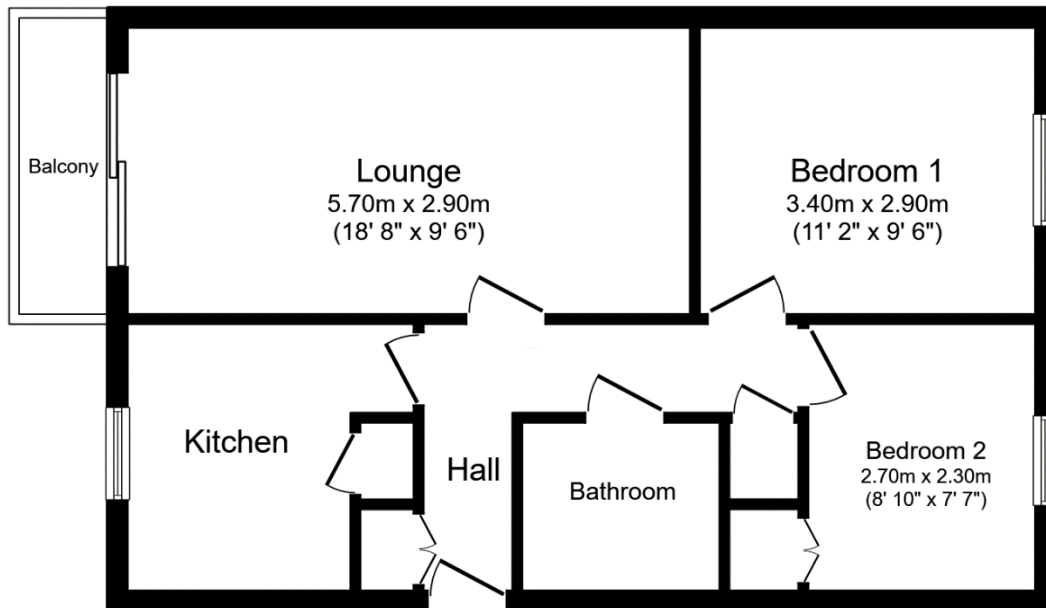


Important Note: Rook Matthews Sayer (RMS) for themselves and for the vendors or lessors of this property, whose agents they are, give notice that these particulars are produced in good faith, are set out as a general guide only and do not constitute part or all of an offer or contract. The measurements indicated are supplied for guidance only and as such must be considered incorrect. Potential buyers are advised to recheck the measurements before committing to any expense. RMS has not tested any apparatus, equipment, fixtures, fittings or services and it is the buyer's interests to check the working condition of any appliances. RMS has not sought to verify the legal title of the property and the buyers must obtain verification from their solicitor. No persons in the employment of RMS has any authority to make or give any representation or warranty whatever in relation to this property.

Money Laundering Regulations – intending purchasers will be asked to produce original identification documentation at a later stage and we would ask for your co-operation in order that there will be no delay in agreeing the sale. We will also use some of your personal data to carry out electronic identity verification. This is not a credit check and will not affect your credit score.

16 Branches across the North-East





Floor Plan

Floor area 52.4 m² (564 sq.ft.)

TOTAL: 52.4 m² (564 sq.ft.)

This floor plan is for illustrative purposes only. It is not drawn to scale. Any measurements, floor areas (including any total floor area), openings and orientations are approximate. No details are guaranteed, they cannot be relied upon for any purpose and do not form any part of any agreement. No liability is taken for any error, omission or misstatement. A party must rely upon its own inspection(s). Powered by www.Propertybox.io

Important Note: Rook Matthews Sayer (RMS) for themselves and for the vendors or lessors of this property, whose agents they are, give notice that these particulars are produced in good faith, are set out as a general guide only and do not constitute part or all of an offer or contract. The measurements indicated are supplied for guidance only and as such must be considered incorrect. Potential buyers are advised to recheck the measurements before committing to any expense. RMS has not tested any apparatus, equipment, fixtures, fittings or services and it is the buyer's interests to check the working condition of any appliances. RMS has not sought to verify the legal title of the property and the buyers must obtain verification from their solicitor. No persons in the employment of RMS has any authority to make or give any representation or warranty whatever in relation to this property.

Money Laundering Regulations – intending purchasers will be asked to produce original identification documentation at a later stage and we would ask for your co-operation in order that there will be no delay in agreeing the sale. We will also use some of your personal data to carry out electronic identity verification. This is not a credit check and will not affect your credit score.

16 Branches across the North-East

